

Newsletter

May 2023



Welcome to our latest Newsletter – we hope you find it useful. Please also have a look at our website where you will find lots more information: www.grasmerenursery.co.uk

May Half-Term Holidays

Nursery is closed to term-time children from Monday, 29th May to Friday, 2nd June
Monday, 5th June is a staff training day – all children return to nursery on Tuesday, 6th June

Sponsored Brick Build

Thank you to everyone who donated to our sponsored brick build.

We are thrilled to say that we have currently raised a massive £729.00, with money still coming in!!

This Half Term's Curriculum



0-3's

Our key text is "Peppa Loves our Planet", our key rhyme is "Wind the Bobbin Up" and our value is "Respect". This half term has seen Red and Purple Classes settle in more children. The new children are adapting well to our routines and are generally enjoying all aspects of nursery, where they are making secure relationships and having fun.

Red Class have visited our wonderful Orchard, where the children have flourished, learning about our beautiful natural world. They also visited the tortoises, ran and climbed freely and enjoyed rolling down the hill. We have been recycling our paper, card and milk cartons and are continuing to learn about our value "Respect", particularly with regard to our toys and books. We are supporting the children with their pencil grip and they have produced lovely patterns, lines and circles and have even created "This is me", one of our grassroots goals. Purple Class also visited the Orchard, collecting twigs, leaves, flowers and grass to make collages for their scrapbooks. We have also been learning to name and point to our body parts.

Both Classes enjoyed the King's Coronation party, joining together for fun, food and dancing. It was a great success and great to see the children so engaged. Their sequential learning becoming more apparent with helping each other. We would like to wish you all a happy half-term break and look forward to more fun and learning in the Summer.

3-5's

This half term our theme has been Recycling/Environment. Our value is Respect. Our key texts are:

Handa's Surprise by Eileen Brown. See the link below to watch with your child or read the book, and discuss the different African animals, fruit and what the differences are between Handa's home and community and ours in England.

https://www.youtube.com/watch?v=XyIV_xYi0as

Let's Recycle by Roderick Hunt. Can your children tell you all about recycling, 'Reduce, Reuse, Recycle'! or what ideas do they have about how can we look after our planet?

Our key rhyme is '**The Recycling Song**' by our very own Mrs Jarvis. We have had a lovely half term learning about the different materials which can be recycled and how to keep our environment clean and safe by doing litter collecting.

We have been looking at the seasons spring/summer and what changes have been taking place.

For St. George's Day we made flags and learnt all about how the brave knight slayed the dragon. Below are some links to watch with your children! What can they remember about St. George?

<https://www.bbc.co.uk/cbeebies/watch/lets-celebrate-st-georges-day>

<https://www.bbc.co.uk/iplayer/episode/m000vdr7/my-first-festivals-series-2-5-st-georges-day>

We worked with our local community gardeners; they challenged us to see which class could grow the tallest sunflower! A group of children from each class went out to the grass area outside Grasmere near the park and planted the sunflower seeds. Keep an eye on them to see how tall they grow!

We went to visit the residents at Little Bramingham Farm to share some new songs which we had been learning at school, including God Save the King. We gave the residents some union jack flags which the children made. The children thoroughly enjoyed the experience and we hope to go again during the Summer 2 term. We celebrated King Charles III's Coronation by having our own party, unfortunately, due to the weather we had to do this inside. However, the children had a great time playing party games, eating all the amazing party food which you kindly and generously donated, as well as delicious ice-creams and singing 'God Save the King' as a whole school!

We are extremely excited to have received a letter back from Sir David Attenborough. We sent him a letter giving him our ideas of how we could save the Hazel Dormouse which are nearly extinct across some places in England. Look out for this going onto our website but we also have a copy proudly displayed in reception!

With the final half term approaching we will be focusing on the key text 'The Colour Monster Goes to School' by Anna Llenas, to help prepare your children in making the big transition of moving onto primary school. It would be wonderful if you could share this book at home too, to support the children with their feelings and emotions about moving on.

We look forward to having lots of fun with your children over the last half term.

What is the role of a school governor and how can I get involved?

Governors play a critical part in the school to ensure developing and maintaining strong links with parents, staff and pupils. To support this, governors can often be found in and around school, attending meetings and experiencing the many different activities that take place at Grasmere. We also try to attend as many school functions as we are able. Dr Mohammad Alramahi is our elected Chair of Governing Body and he brings a wealth of school knowledge and governance experience to our Governing Body.



The Governing Body meets at least four times per school year to consider the strategic aspects impacting the school and the pupils. The Resources & Finance Committee meets at least four times per school year to consider financial, human resources, health and safety and premises matters. The Standards & Curriculum Committee meets at least four times per school year to consider all areas of the curriculum, teaching, learning, progress and attainment, and safeguarding of pupils.

Our Governing Body currently has Parent Governor and Co-opted Governor vacancies. If you would like to obtain further information on how you can support the school by joining the Governing Body, please contact the Chair of Governing Body at: chair.governor@grasmere.nurseryluton.com

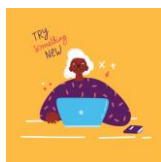
Chair of Governors
Dr Mohammad Alramahi

School Readiness Course

Luton Adult Learning have kindly offered to run a "school readiness" for the parents of children who will be starting at Primary/Infant School this September. This course is free and will be run on-line.

Enrolment will take place on Wednesday 21st June and the course will run from Wednesday, 28th June to 12th July from 9.30am to 11am.

Further details and how to book have been emailed to parents. If you would like to book a place, please complete and submit the form or speak to Lois.



Summer Term

With the weather slowly improving, just a few reminders for the Summer Term:



- Please ensure your child is always appropriately dressed for the weather and please bring a named hat.
- When the weather is hot, please ensure you apply sun cream to your child before coming to nursery. If your child stays all day, please leave a named bottle of sun cream at nursery for staff to reapply during the day.
- Please ensure your child has the appropriate footwear for outdoor play (ie. running and climbing) during the summer - sturdy footwear should always be worn (no flimsy sandals, flip flops or sliders please).

Domestic Abuse

Domestic abuse can include controlling, coercive, threatening, degrading and violent behaviour, including sexual violence.

Lois, our Family Worker, is a "Domestic Abuse Responder" and can help to support and signpost you to professionals who can offer specialist help and advice. If you need to speak to Lois at any time, please call or email:

lrobins@grasmere.nurseryluton.com

For further information and support, please also see the BDAP website at: <https://bedsdv.org.uk/>



Stay & Play and Baby Group

Our Stay & Play sessions continue to be very busy and, unfortunately, so busy on occasions that we have to turn families away.

Stay & Play is held every Friday from 9.30am to 11.00am during term time for children under 5.

Baby Group is also held every Friday from 1.30-2.30pm for children under 18 months of age.

We ask for a donation of just £1 per family per session.

For more information about these groups, please speak to Lois.



Safeguarding

In line with Luton Council guidelines, we follow very strict safeguarding procedures at nursery. Please let us know if your child has an accident outside of nursery which results in an injury or mark (cuts/bumps/bruises, etc.), we may also speak to your child if it is appropriate.

We also ask that you do not use your mobile phone for any reason whilst on the nursery premises.



Parking

Thank you to everyone who parks in a courteous and safe manner when bringing or collecting your child from nursery. Parking is being constantly monitored and has improved but we still have issues with cars parking across the gates to our car park, on the yellow school zig-zag markings, on the pavements and across our neighbours' driveway.



We appreciate how difficult parking is but appeal to you, and anyone who brings or collects your child from nursery, to park in the proper, safe and legal manner, showing consideration for others and ensuring the safety of all.

Community Garden Project

On behalf of all stakeholders, I'd like to thank the Community Garden Group for continuing to work with the school on outdoor improvements around the nursery. The Neighbourhood team are working really hard on improving the park next to Nursery and if you come into nursery that way, you will see the massive improvements they have made. However, they are still looking for more parents and families to join them in their efforts to make our community a place to be proud of.

If you are interested in volunteering with them, please come to reception for more details.



Flying Start Online Workshops

Flying Start is a partnership approach to the delivery of services for families in Luton, with a focus on the antenatal period and the early years.

For lots of really useful information for families, including details of training, workshops and on-line sessions, please visit their website.

<https://www.flyingstartluton.com/whats-on-for-parents/flying-start-groups-services/>



Family Support

Lois, our Family Worker, and Emma, our Early Intervention Worker, are here to support you in any way they can, alongside the staff in your child's Class. They can help with your child's transition into nursery, toilet training, feeding, sleeping, behaviour, starting school applications, or even a friendly chat.

If you have any questions or need any support or help, please call or email: lrobins@grasmere.nurseryluton.com



Reminders

- Please ensure that your child comes to nursery dressed appropriately to go outdoors whatever the weather.
- Please make sure all your child's clothes are named, including outdoor coats, hats, scarves and gloves (their name written on the label is good enough!). It is often a good idea to put gloves on elastic through your child's coat sleeves.
- Please bring a bag with at least one full spare change of clothes in case of accidents – this can be left at nursery and please name the outside of all bags.
- Please ensure that your child does not bring in toys from home; it is always upsetting for them if they get lost or broken and they are safer at home.
- Please do not open the gate to your child's class. For the safety of the children, the gates should only be opened by a member of staff.
- Please ensure that your child does not have any food, drinks or medication in their bags.
- Please do not put any nuts or foods containing nuts in packed lunches due to serious allergies.

