

Newsletter

March 2026



Welcome to our latest Newsletter, we hope you find it useful!

You will find lots more information on our website, so please do take the time to have a look:

www.grasmerenursery.co.uk

Easter Holiday

Nursery will be closed to all children from Monday 30th March to Friday 10th April

All children return on Monday 13th April

For all holiday dates, see the academic calendar on our website: [Academic Calendar](#)

May Half Term Holiday

Nursery is closed to all children from Monday 25th May to Monday 1st June

All children return on Tuesday 2nd June

Next Half Term's Curriculum

0-3s (Purple, Red and Silver Rooms)

Purple Class - We have a busy half term planned as we approach the Summer term and will be celebrating International Dance Day (29th April) by dancing to music from around the world. We will also be growing sunflowers in the garden and using our watering cans to help the flowers grow. The children have loved visiting the Orchard every Wednesday and these outdoor sessions will be continuing, as we hunt for bugs and fruit outdoors. We have been enjoying exploring sensory touch books this half-term and will be using our puppets as props in stories and at singing time. Lastly, the children will be enjoying some fruit tasting as we try passionfruit, peaches and plums. We hope you have a lovely Easter break!

Red & Silver Class – Our theme for the next half-term is Recycling and looking after our environment. Our children will be learning what materials are recyclable and what materials are not. We would like to ask all parents/carers to continue this learning at home. Our key text is 'Busy Recycle' and our value is 'Respect'. We will be introducing and learning a new key rhyme 'Wind the Bobbin Up'. The key vocabulary we will be focusing on are 'respect', 'recycle' and 'summer.'

Red and Silver Class are planning a trip to the Grasmere Community Garden and we are excited to see all the new plants that have been growing. The week commencing 18th May is 'Walk to School' week. We would like to encourage parents/carers to stop and talk with your children about the environment around them. We will also be continuing the Lending Library this half-term and would like to gently remind parents/carers to return any outstanding books, if you haven't already done so.

We hope you have a restful Easter break with your families.

3-5s (Yellow, Blue and Green Rooms)

A short half-term but a busy and fun one. Spring has arrived and we have been outside noticing the changes from winter.

We have been planting and learning about the lifecycle of plants. We planted green beans in our sensory garden, so the children will be able to watch them grow. We have also planted herbs and flowers there too.

We made Mother's Day cards for the special people in our lives. We celebrated St. Patrick's Day and Eid and used our Celebrations Chart to discuss the similarities and differences between different celebrations and festivals.

World Book Day was a great opportunity to focus on one of our Grasmere Grassroot Goals 'Love of Books and Language'. We shared our favourite books and made some of our own. Thank you for supporting us with this by the children coming in dressed up and bringing their favourite books from home to share with their friends.

Next half term, Summer 1, our theme is 'Recycling/Environment'. Our Value is 'Respect' and the season is 'Summer'. Our key texts are 'Tidy' by Emily Gravett and 'Let's Recycle' by Roderick Hunt and Alex Brychta. Here is the link to the author Emily Gravett reading her own story 'Tidy' with help from her dog Lily: <https://www.youtube.com/watch?v=GZUKrBkfw6g>

Or if you would like to purchase it to share at home, here is the link:

https://www.amazon.co.uk/Tidy-Emily-Gravett/dp/1447273990/ref=tmm_pap_swatch_0

Our key rhyme is written by our very own Mrs Jarvis and is called 'The Recycling Song'. We will be focusing on how we can look after our environment and the importance of recycling. This helps the children to learn how to respect and help our environment.

St. George's Day is on Thursday 23rd April so we will mark the day by making flags and learning all about the history behind the celebration.

Parent Consultation Dates

Parent consultations will be held for all children during the week of 27th April. This is an opportunity for you to meet with your child's keyworker to discuss their progress. Further details and times will be sent out after Easter so please book your appointment.



Oral Health

We will soon begin a LiveSmart dental wellness programme in conjunction with the Dental Wellness Trust for our 3- and 4-year-old children who attend nursery full-time. The Livesmart supervised tooth brushing programme is specially designed to teach children about good oral health. Further details and consent forms have been given to relevant parents/carers and if you have not already done so, please return your consent form asap. To support good oral health and tooth brushing at home, please see the links below for information, advice and support:

<https://www.nhs.uk/live-well/healthy-teeth-and-gums/taking-care-of-childrens-teeth/>
<https://www.dentalhealth.org/childrens-teeth>
<https://www.communitydentalservices.co.uk/oral-health-improvement/resources/>
<https://www.nhs.uk/baby/babys-development/teething/looking-after-your-babys-teeth/>
<https://www.nhs.uk/healthier-families/>



Home Safety

Luton 'Safe at Home' is a child accident prevention service delivered through a local multi-agency partnership led by Flying Start & Early Years Alliance in association with Public Health and Bedfordshire Fire & Rescue Service. The scheme provides a FREE service for families in Luton who are pregnant or have young children under the age of five. All Parents/Carers living in Luton with children under five can have a free home safety risk assessment. Please see their website for information about further help and support:



<https://www.safeathomecip.org.uk/>

Accident Prevention -

<https://bedslutonchildrenshealth.nhs.uk/staying-safe-and-accident-prevention/>

Bedfordshire Fire Service also offer safety advice and free home fire safety visits. For further information, please see their website:

<https://www.bedsfire.gov.uk/safety-advice>



Bedfordshire
Fire & Rescue Service

Family Support

Please see the links below for further local and national support:

Luton Family Hubs - <https://familyhubs.luton.gov.uk/>

Flying Start - 01582 548356: www.flyingstartluton.com/

Luton Supporting You Services - <https://lutonsupportingyou.co.uk/services/>

Better Housing Better Health - <https://www.bhbh.org.uk/>

Cost of Living Support - <https://www.gov.uk/cost-of-living>

Luton Foodbank - <https://lutonfoodbank.org.uk/>

Luton Citizens Advice - <https://www.citizensadvice.luton.org.uk/>

NHS Children's Health & Support - <https://www.bedslutonchildrenshealth.nhs.uk/>

Childhood Illnesses - <https://cambspborochildrenshealth.nhs.uk/common-illnesses/>

School Attendance - [Is my child too ill for school](#)

A Parent guide to regulating screen time and ideas for screen-free activities: [Parent Guide to Screen Time](#)

Parentline - For parents and carers of those aged 0-19 TEXT: 07507 331886. Parentline offers advice and support on a range of issues such as weaning, sleep and emotional health. You can also find out how to access other local services. For more information please visit: [Parentline](#)

On-line Safety - For advice on how to keep your children safe on-line visit these websites:

[Childnet](#) [NSPCC](#) [ParentSafe](#) [UK Safer Internet Centre](#)

Level Trust - Charity that helps families overcome the costs of education, so all children in Luton have the chance to love learning: [Level Trust](#)



Easter Holidays

Kids Eat Free or for £1:

<https://moneysavingcentral.co.uk/kids-eat-free>

Easter Activities/Ideas:

<https://www.culturetrust.com/whats-on/easter-holidays>

<https://www.activeluton.co.uk/news/banish-the-boredom-this-easter-holiday---kids-activities-in-luton>

<https://place.stepforwardluton.co.uk/>

<https://lutonpoint.co.uk/pl/news-events/easter-fun/>

<https://www.flyingstartluton.com/whats-on-for-parents/local-groups-services/>

<https://www.bbc.co.uk/tiny-happy-people/activities>



Starting School in September 2026 (for children born between 01/09/2021-31/08/2022)

If your child turns 4 before 31st August, you should already have applied for an Infant/Primary school place for September. If you have not yet done so, you must submit your application as soon as possible.

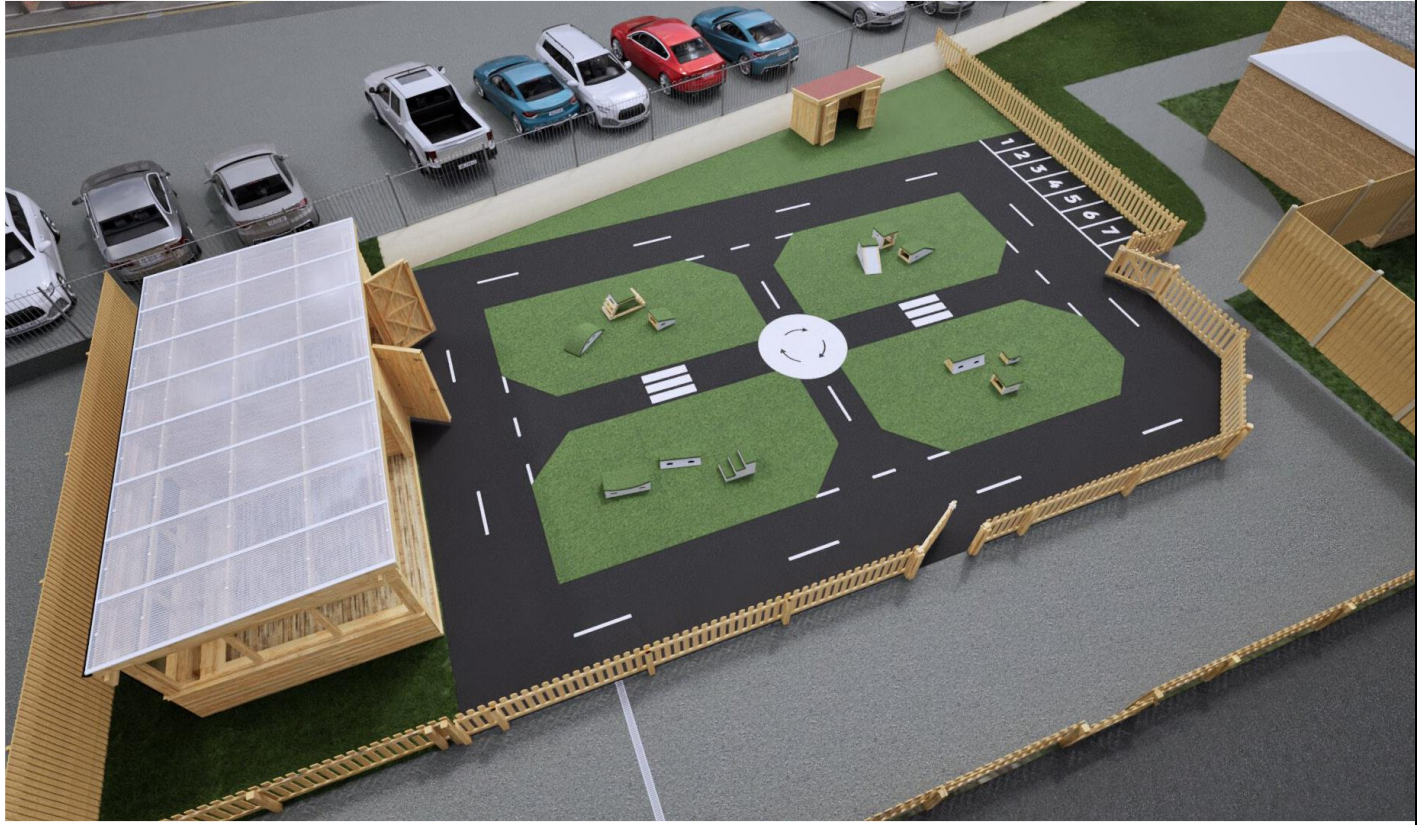


Allocated schools will be sent to parents/carers by the Luton Council Admissions Team on **16th April**.

If you have any questions in the meantime, please speak to Lois.

Building Work

As you will have seen, we are currently renovating our 'bike playground'. We are really excited to see it completed and are hoping it will be ready for the children to use after the Easter Holidays.





BRAMINGHAM
DENTAL

KIDS DENTAL CARE

OPEN SATURDAYS AND EVENINGS

- NHS Dental Checkup for ages 0-18
- Oral Hygiene Advice
- Fluoride Application
- Dental Cleaning & Treatment
- Braces
- Free Carpark



CONTACT US:

☎ 01582 490 410

📍 Whitehorse Vale, Luton, LU3 4AD

🌐 www.braminghamdental.com

Bring neighbours together

Accessible for all

Bring play to urban communities

Turn your road into a **Play Street**

What is a play street?

A Play Street can be created when a road is closed off to traffic for up to three hours, up to four times a year. This is so that children can have a space to play freely and safely right outside their homes.

Why have play streets?

- They transform streets into vibrant, safe space where people come together
- They promote physical activity, social interaction and a sense of belonging
- They allow children and adults to get to know their neighbours
- They provide a good example of what active citizenship can achieve



To find out more, or get involved, email PlayStreets@luton.gov.uk, scan the QR code or visit luton.gov.uk/playstreets

luton.gov.uk/PlayStreets



